

**INTERNAL QUALITY ASSURANCE REPORT (IQAC)**  
**GOVERNMENT J. THANKIMA COLLEGE**

**STUDENT ALUMNI (BBA) FEEDBACK ANALYSIS REPORT**  
**2021-2022**

**Please Note:**

a) Ratings are expressed as the following:

5 = Strongly Agree	4 = Agree	3 = Not Sure	2 = Disagree	1 = Strongly Disagree.
--------------------	-----------	--------------	--------------	------------------------

b) Total number of respondents is 10.

c) Data Interpretation shows the highest average.

**Data Analysis of Alumni Feedback with various Criteria in respect to different ratings.**

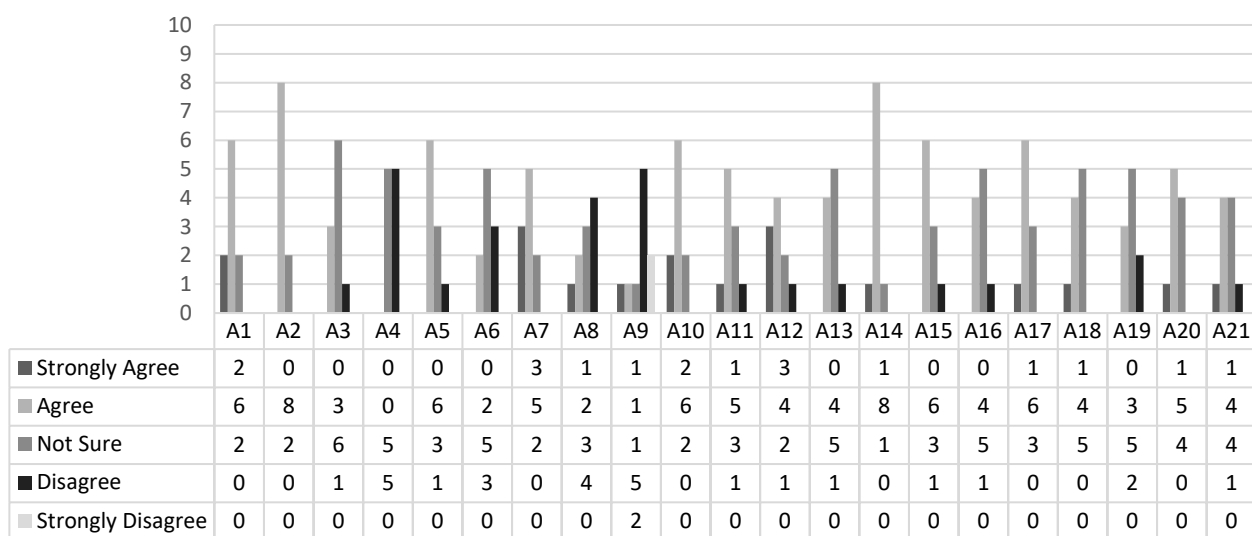
CRITERIA ↓	5		4		3		2		1		Overall Average Ratings
	No of Respondents	Percentage	No of Respondents	Percentage	No of Respondents	Percentage	No of Respondents	Percentage	No of Respondents	Percentage	
A1	2	20%	6	60%	2	20%	0	0%	0	0%	4 (Agree)
A2	0	0%	8	80%	2	20%	0	0%	0	0%	
A3	0	0%	3	30%	6	60%	1	10%	0	0%	
A4	0	0%	0	0%	5	50%	5	50%	0	0%	
A5	0	0%	6	60%	3	30%	1	10%	0	0%	
A6	0	0%	2	20%	5	50%	3	30%	0	0%	
A7	3	30%	5	50%	2	20%	0	0%	0	0%	
A8	1	10%	2	20%	3	30%	4	40%	0	0%	
A9	1	10%	1	10%	1	10%	5	50%	2	20%	
A10	2	20%	6	60%	2	20%	0	0%	0	0%	
A11	1	10%	5	50%	3	30%	1	10%	0	0%	
A12	3	30%	4	40%	2	20%	1	10%	0	0%	
A13	0	0%	4	40%	5	50%	1	10%	0	0%	
A14	1	10%	8	80%	1	10%	0	0%	0	0%	
A15	0	0%	6	60%	3	30%	1	10%	0	0%	
A16	0	0%	4	40%	5	50%	1	10%	0	0%	
A17	1	10%	6	60%	3	30%	0	0%	0	0%	
A18	1	10%	4	40%	5	50%	0	0%	0	0%	
A19	0	0%	3	30%	5	50%	2	20%	0	0%	
A20	1	10%	5	50%	4	40%	0	0%	0	0%	
A21	1	10%	4	40%	4	40%	1	10%	0	0%	
TOTAL	18	180%	92	920%	71	710%	27	270%	2	20%	
AVERAGE	0.86	9%	4.38	44%	3.38	34%	1.29	13%	0.10	1%	

A1	The office staff in the college is cooperative and helpful
A2	The library staff is cooperative and helpful
A3	Online educational resources are available and accessible in the computer centre/Library
A4	Internet facility provided in the library is satisfactory
A5	The prescribed books/reading materials are available in the library
A6	Equipment in the lab(s) is in good working condition
A7	Results are displayed by the college
A8	Separate common rooms for girls and boys are available
A9	Toilets/washrooms are clean and properly maintained
A10	The classrooms are clean and well maintained
A11	The campus is green and eco-friendly
A12	Clean drinking water is available in the college campus

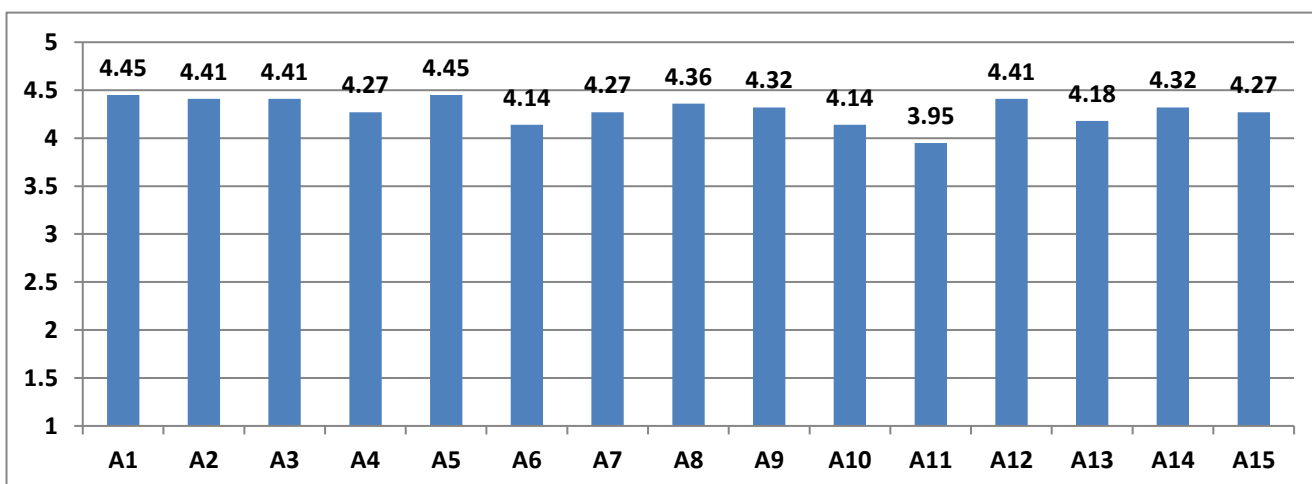
**INTERNAL QUALITY ASSURANCE REPORT (IQAC)  
GOVERNMENT J. THANKIMA COLLEGE**

A13	The buildings/classrooms are accessible to disabled persons
A14	The campus has adequate power supply
A15	Our grievances are redressed/problems are solved well in time
A16	The functioning of the placement cell in the college is satisfactory
A17	Continuous efforts are taken by the college to improve the quality of teaching and learning
A18	The college takes interest in strengthening its ties with industries, professional bodies etc.
A19	The college promotes student exchange, internship etc. programmes for providing new opportunities to students
A20	The mentoring process of the college helped me to identify my strengths and face challenges
A21	The overall teaching and mentoring process of the college is excellent

**NUMBER OF RESPONDENTS WITH RESPECT TO  
DIFFERENT RATINGS**



**Data Interpretation:** By collectively weighing the above data, it shows that 44 % from the total 10 respondents Agree on the Various Criteria laid down.



  
**(REBECCA KHIANGTE)**  
 Coordinator, IQAC

**INTERNAL QUALITY ASSURANCE REPORT (IQAC)**  
**GOVERNMENT J. THANKIMA COLLEGE**